



# MYBPC1 Polyclonal Antibody

<b>Catalog No</b>	YP-Ab-03154
<b>Isotype</b>	IgG
<b>Reactivity</b>	Human;Mouse;Rat
<b>Applications</b>	WB;ELISA;IHC
<b>Gene Name</b>	MYBPC1
<b>Protein Name</b>	Myosin-binding protein C slow-type
<b>Immunogen</b>	The antiserum was produced against synthesized peptide derived from human MYBPC1. AA range:218-267
<b>Specificity</b>	MYBPC1 Polyclonal Antibody detects endogenous levels of MYBPC1 protein.
<b>Formulation</b>	Liquid in PBS containing 50% glycerol, 0.5% BSA and 0.02% sodium azide.
<b>Source</b>	Polyclonal, Rabbit,IgG
<b>Purification</b>	The antibody was affinity-purified from rabbit antiserum by affinity-chromatography using epitope-specific immunogen.
<b>Dilution</b>	WB 1:500-2000;IHC-p 1:50-300; ELISA 2000-20000
<b>Concentration</b>	1 mg/ml
<b>Purity</b>	≥90%
<b>Storage Stability</b>	-20°C/1 year
<b>Synonyms</b>	MYBPC1; MYBPCS; Myosin-binding protein C; slow-type; Slow MyBP-C; C-protein, skeletal muscle slow isoform
<b>Observed Band</b>	120kD
<b>Cell Pathway</b>	cytosol,myofibril,myosin filament,
<b>Tissue Specificity</b>	Brain,Fetal skeletal muscle,Hippocampus,Liver,Muscle pool- 2 tissue
<b>Function</b>	function:Thick filament-associated protein located in the crossbridge region of vertebrate striated muscle a bands. In vitro it binds MHC, F-actin and native thin filaments, and modifies the activity of actin-activated myosin ATPase. It may modulate muscle contraction or may play a more structural role.,similarity:Belongs to the immunoglobulin superfamily. MyBP family.,similarity:Contains 3 fibronectin type-III domains.,similarity:Contains 7 Ig-like C2-type (immunoglobulin-like) domains.,
<b>Background</b>	This gene encodes a member of the myosin-binding protein C family. Myosin-binding protein C family members are myosin-associated proteins found in the cross-bridge-bearing zone (C region) of A bands in striated muscle. The encoded protein is the slow skeletal muscle isoform of myosin-binding protein C and plays an important role in muscle contraction by recruiting muscle-type creatine kinase to myosin filaments. Mutations in this gene are associated with distal arthrogyrosis type I. Alternatively spliced transcript variants encoding



multiple isoforms have been observed for this gene. [provided by RefSeq, Dec 2011],

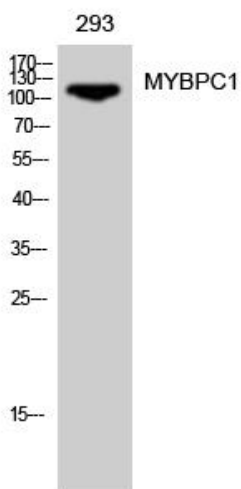
**matters needing attention**

Avoid repeated freezing and thawing!

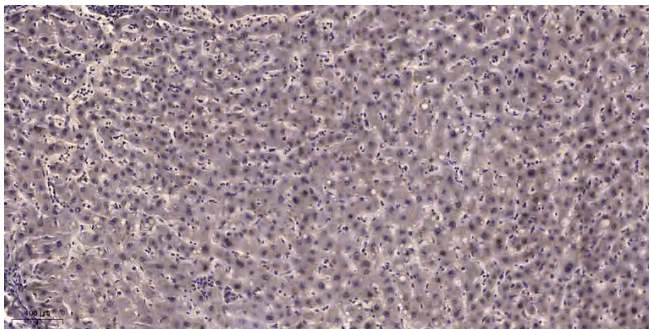
**Usage suggestions**

This product can be used in immunological reaction related experiments. For more information, please consult technical personnel.

**Products Images**



Western Blot analysis of 293 cells using MYBPC1 Polyclonal Antibody diluted at 1:500



Immunohistochemical analysis of paraffin-embedded human liver cancer. 1, Antibody was diluted at 1:200(4° overnight). 2, Tris-EDTA,pH9.0 was used for antigen retrieval. 3,Secondary antibody was diluted at 1:200(room temperature, 45min).